

Emhart Glass

Glass containers are the ideal packaging choice for quality, hygiene and ecological performance. Having invented the underlying manufacturing principle some 80 years ago, Emhart Glass has ranked as the world's market and technology leader in this area ever since. Production lines equipped by us make a good 95 billion glass bottles a year. That is one-third of all the bottles produced worldwide. Operating from three development centres and five manufacturing facilities in the USA, Europe and Asia, Emhart Glass provides state-of-the-art machine technology to support the glass container industry in its ambitious quest to make the ultimate packaging solution.



Martin Jetter, Emhart Glass division president

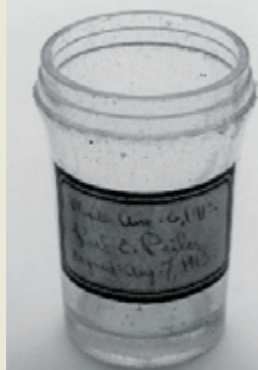
Emhart Glass key figures

Sales in CHF million	400
Number of employees	1100



1912

Keystone development
The Hartford-Fairmont Company, later renamed Emhart Glass, was founded in the US town of Hartford. It pioneered the first shear and feeder mechanisms that became the basis for the modern glass container manufacturing process.



1924

Ingle & Smith patent
Henry W. Ingle and Charles Goodwin Smith applied for the famous patent for a glass blowing machine and method, termed an "IS glassware forming machine". IS stands for "Individual Section". The first four-section IS machine successfully went into operation in 1927.

1952

European expansion
Emhart Glass acquired Aktiebolaget Sundsvalls Verkstäder, a Swedish machinery manufacturer. Expansion continued across Europe with offices opening in the UK, Switzerland and Sweden, followed by Germany and Italy during the sixties.



1974

Popular IS machine
New products brought a vast increase in machinery production. In 1974, Emhart Glass already shipped its 1000th IS machine. At the same time, the company unveiled its first electronic control system which was to gain worldwide acceptance.



1980

Quality inspection systems
Emhart Glass demonstrated its first Aida inspection machine in Brussels. In 1982, it acquired Powers Manufacturing Inc., a US company based in Elmira with an international reputation for quality cold end inspection equipment. Emhart Glass was now a complete systems supplier, covering all aspects of the glass container manufacturing process.

1998

Emhart Glass acquisition
Bucher acquired Emhart Glass as another core business. In 2000, Emhart Glass launched the first servo-electric IS machine.

Emhart Glass

Our superior innovative capabilities have positioned Emhart Glass as the world market and technology leader in manufacturing equipment for the glass container industry. Our machines, components and systems for glass conditioning, glass forming, ware handling and inspection ensure that glass will remain the perfect packaging material for food, beverages, cosmetics and pharmaceuticals.

Unrivalled worldwide The revolutionary servo-electric NIS glass forming machine from Emhart Glass is at the heart of any modern glass container production line, establishing standards of precision in glass forming and process control. Web-based control technology interfaces the hardware and software that direct the key processes. These range from conditioning of the molten glass stream to seamless motion coordination of the complex mechanisms required for high efficiency, flexibility and production quality.

Leading-edge inspection systems To produce absolutely flawless glass containers, manufacturers must be able to depend on accurate, high-performance inspection systems to check every single glass container reliably. We offer a full spectrum of inspection machines using state-of-the-art vision and sensor technology. These allow our customers to provide consumers with attractive glass containers highly efficiently, reliably and with precision.

Tempered glass The glass containers of the future will be both lighter weight and tougher. Emhart Glass is committed not only to optimising and refining the current glass container manufacturing process, but also to developing new glass forming techniques. This brings the dream of “unbreakable” glass containers closer to reality.

Good for the environment and health Glass is a natural raw material. There are no limitations on how many times a used glass container can be melted down and made into a new glass container, using less energy than it took to make the original container. Being chemically and biologically inert, glass protects people's health and conserves the environment.



The precision of our machines makes glass the perfect packaging choice. Glass containers are absolutely safe to health, can be recycled forever and have a strong emotional impact.